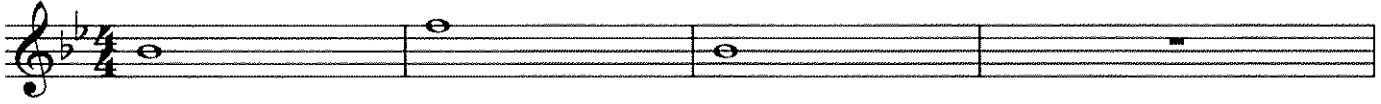


Flute Long Tone/Lip Slur Exercises

Dean

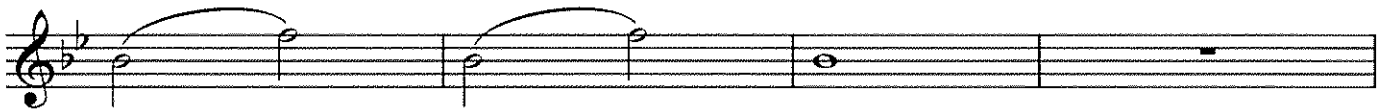
Exercise #1



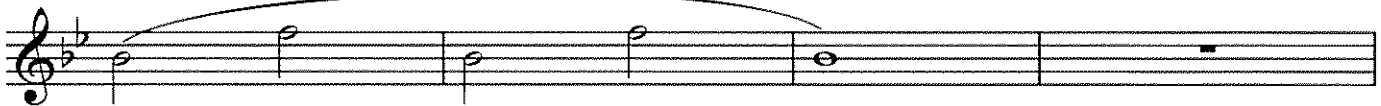
Exercise #2



Exercise #3



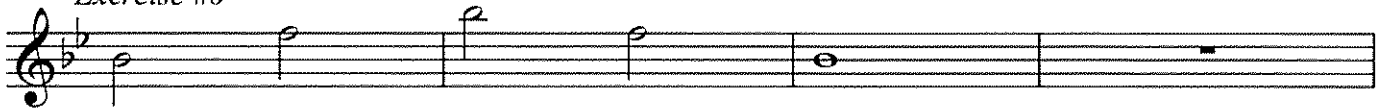
Exercise #4



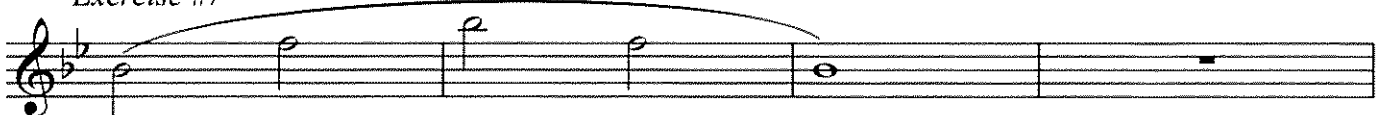
Exercise #5



Exercise #6



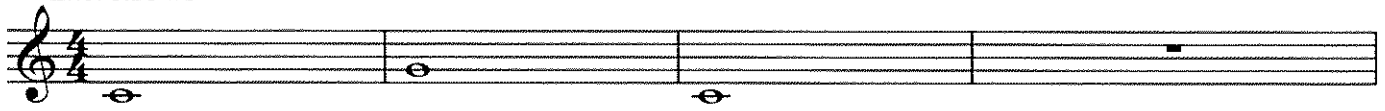
Exercise #7



Clarinet Long Tone/Lip Slur Exercises

Dean

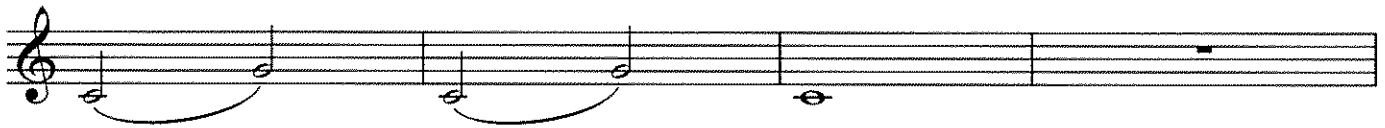
Exercise #1



Exercise #2



Exercise #3



Exercise #4



Exercise #5



Exercise #6



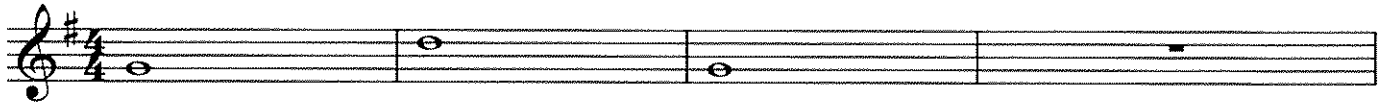
Exercise #7



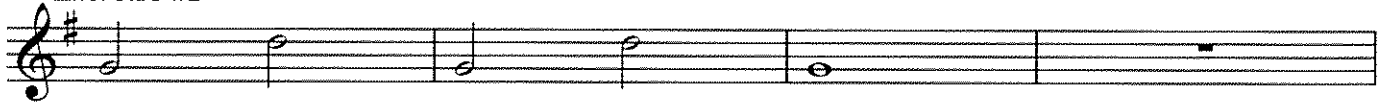
Saxophone Long Tone/Lip Slur Exercises

Dean

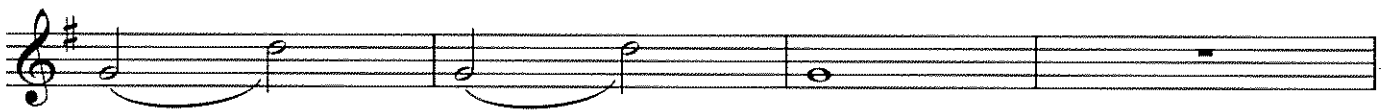
Exercise #1



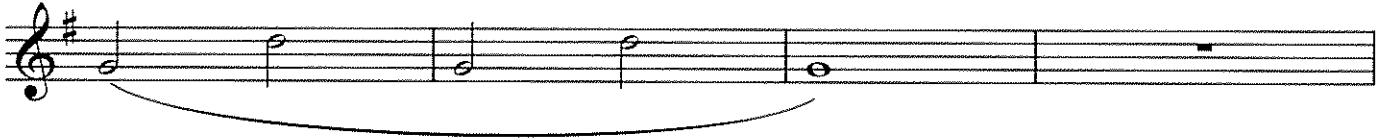
Exercise #2



Exercise #3



Exercise #4



Exercise #5



Exercise #6



Exercise #7



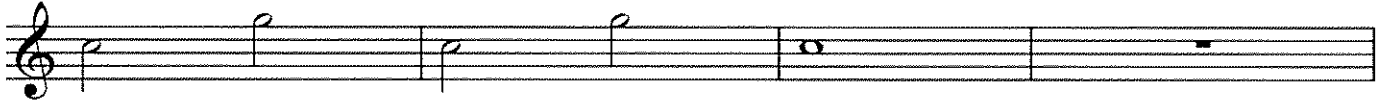
Tenor Saxophone Long Tone/Lip Slur Exercises

Dean

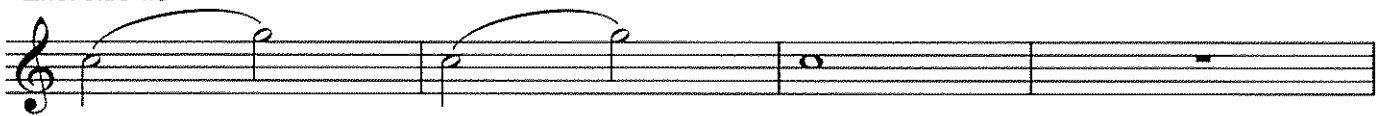
Exercise #1



Exercise #2



Exercise #3



Exercise #4



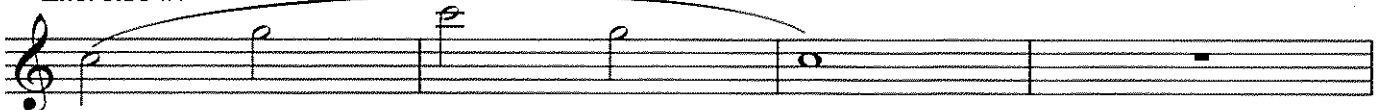
Exercise #5



Exercise #6



Exercise #7



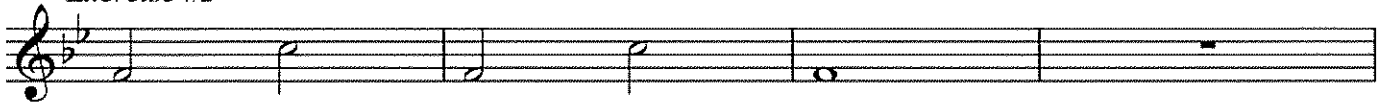
French Horn Long Tone/Lip Slur Exercises

Dean

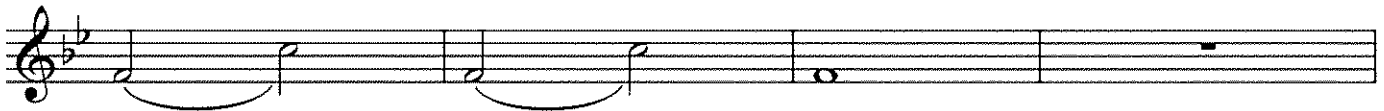
Exercise #1



Exercise #2



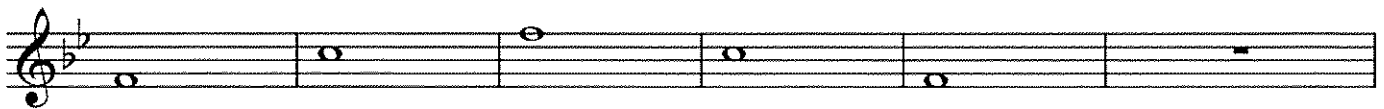
Exercise #3



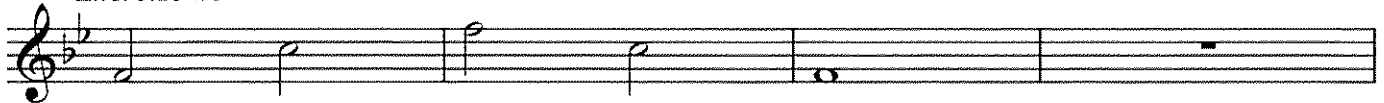
Exercise #4



Exercise #5



Exercise #6



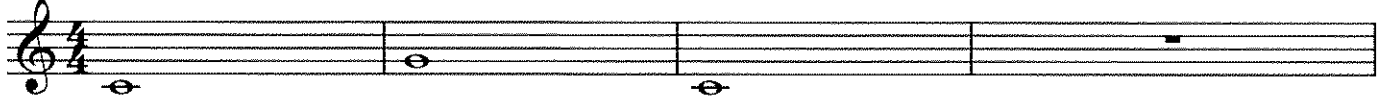
Exercise #7



Trumpet Long Tone/Lip Slur Exercises

Dean

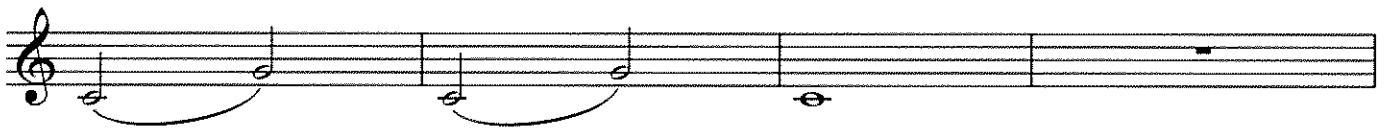
Exercise #1



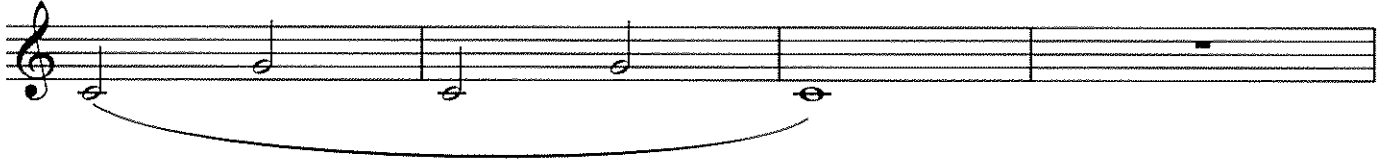
Exercise #2



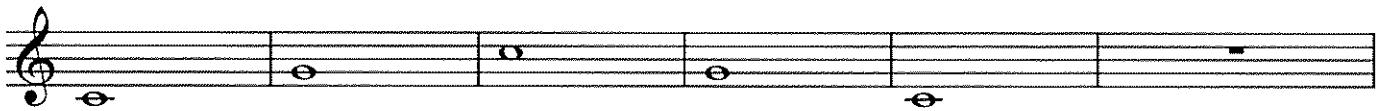
Exercise #3



Exercise #4



Exercise #5



Exercise #6



Exercise #7



Trombone Long Tone/Lip Slur Exercises

Dean

Exercise #1

Exercise #2

Exercise #3

Exercise #4

Exercise #5

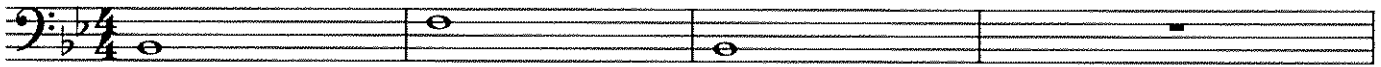
Exercise #6

Exercise #7

Baritone Long Tone/Lip Slur Exercises

Dean

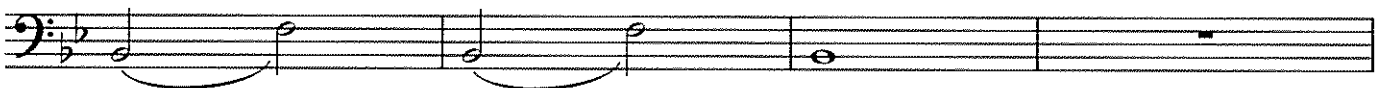
Exercise #1



Exercise #2



Exercise #3



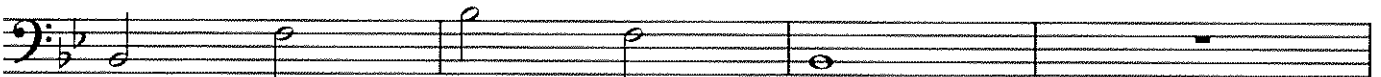
Exercise #4



Exercise #5



Exercise #6



Exercise #7



Tuba Long Tone/Lip Slur Exercises

Dean

Exercise #1



Exercise #1: A single staff in bass clef with a key signature of one flat (Bb) and a 4/4 time signature. The melody consists of four measures: a whole note G2, a whole note F2, a whole note E2, and a whole note D2. A slur is placed over the final D2 note.

Exercise #2



Exercise #2: A single staff in bass clef with a key signature of one flat (Bb) and a 4/4 time signature. The melody consists of four measures: a quarter note G2, a quarter note F2, a quarter note E2, and a quarter note D2. A slur is placed over the final D2 note.

Exercise #3



Exercise #3: A single staff in bass clef with a key signature of one flat (Bb) and a 4/4 time signature. The melody consists of four measures: a quarter note G2, a quarter note F2, a quarter note E2, and a quarter note D2. A slur is placed over the first two notes (G2 and F2). A double bar line is placed after the third measure.

Exercise #4



Exercise #4: A single staff in bass clef with a key signature of one flat (Bb) and a 4/4 time signature. The melody consists of four measures: a quarter note G2, a quarter note F2, a quarter note E2, and a quarter note D2. A slur is placed over the first four notes (G2, F2, E2, and D2). A double bar line is placed after the third measure.

Exercise #5



Exercise #5: A single staff in bass clef with a key signature of one flat (Bb) and a 4/4 time signature. The melody consists of four measures: a whole note G2, a whole note F2, a whole note E2, and a whole note D2. A slur is placed over the final D2 note.

Exercise #6



Exercise #6: A single staff in bass clef with a key signature of one flat (Bb) and a 4/4 time signature. The melody consists of four measures: a quarter note G2, a quarter note F2, a quarter note E2, and a quarter note D2. A slur is placed over the final D2 note.

Exercise #7



Exercise #7: A single staff in bass clef with a key signature of one flat (Bb) and a 4/4 time signature. The melody consists of four measures: a quarter note G2, a quarter note F2, a quarter note E2, and a quarter note D2. A slur is placed over the first four notes (G2, F2, E2, and D2). A double bar line is placed after the third measure.

Bass Guitar Long Tone/Lip Slur Exercises

Dean

Exercise #1

Exercise #2

Exercise #3

Exercise #4

Exercise #5

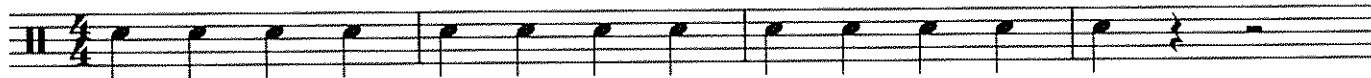
Exercise #6

Exercise #7

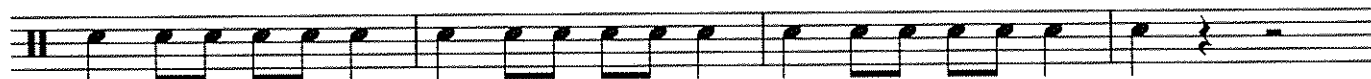
Snare Long Tone/Lip Slur Exercises

Dean

Exercise #1



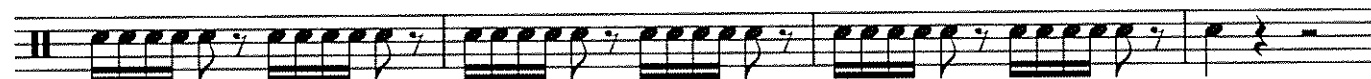
Exercise #2



Exercise #3 (Paradiddle) RLRR or LRL



Exercise #4



Exercise #5

R R L L R R L L R R L L R R L L R R L L



Exercise #6



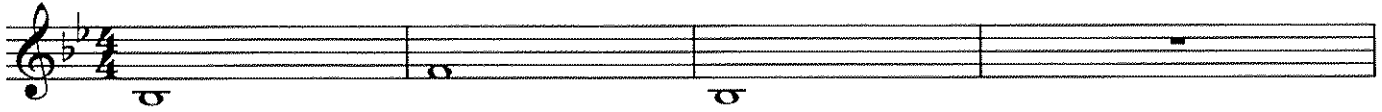
Exercise #7



Mallet Long Tone/Lip Slur Exercises

Dean

Exercise #1



Exercise #2



Exercise #3



Exercise #4



Exercise #5



Exercise #6



Exercise #7

