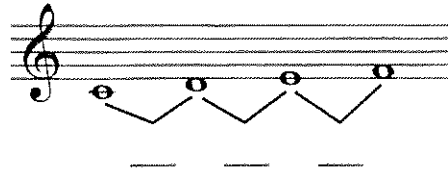


Tetrachord & Major Scale Review

1. Indicate the distance between each of the four pitches.
(H = half step; W = whole step)



2. This pattern of whole steps and half steps indicates that the above example is called a _____.
3. Notate each tetrachord based on the given first pitch. (Use the piano keyboard on the inside front cover to help you.)

a)

b)

c)

d)

e)

f)

g)

h)

4. A major scale is created when two tetrachords are joined by a _____ step.
5. Using the tetrachords from #3 and the answer to #4, construct each major scale indicated. (The first pitch is provided.)

a) F Major

b) G Major

c) B \flat Major

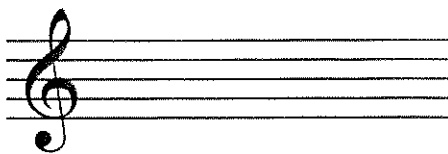
d) D Major

Key Signature Review

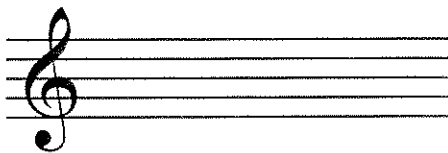
1. Write the order of sharps: _____

2. Write the order of flats: _____

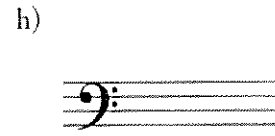
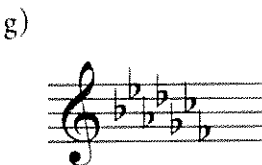
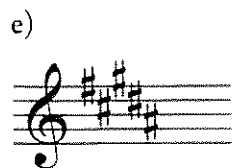
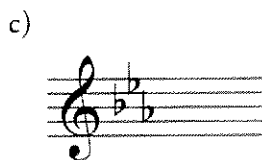
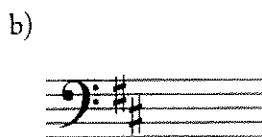
3. Construct the sharps in order on the appropriate lines and spaces in both treble and bass clef.



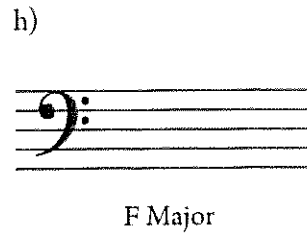
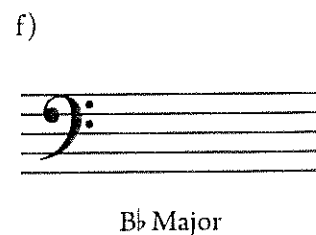
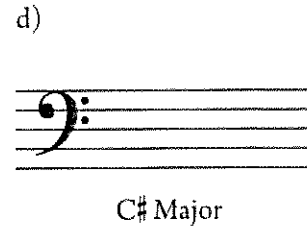
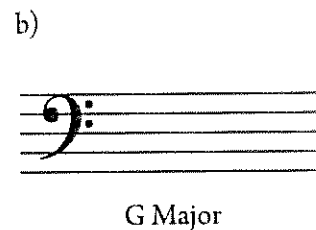
4. Construct the flats in order on the appropriate lines and spaces in both treble and bass clef.



5. Name each major key as indicated by the key signature.



6. Construct each key signature for the indicated major key.



Circle of Keys Review

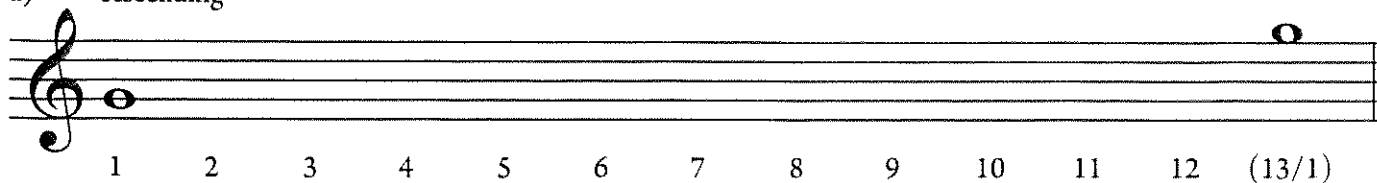
Using either treble clef or bass clef, complete the circle of keys with key signatures and key names. A few have been completed for you.

The diagram shows a circle of keys with 12 positions. The top position is labeled 'C' with a treble clef. Moving clockwise, the positions are labeled B \flat , B, A, G, F, E, D, C, B, A, G, F. The bottom positions are labeled G, F, E, D, C, B, A, G, F, E, D, C. The top position is also labeled '0' and 'b's' on the left and '#s' on the right. The bottom positions are labeled 'C#' and 'C' on the left, and 'G' and 'F' on the right.

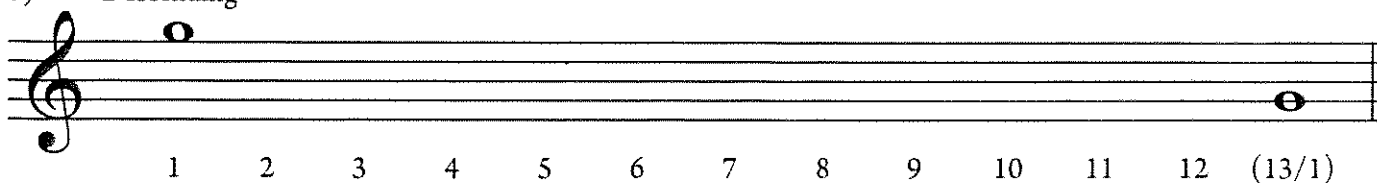
Major & Chromatic Scale Writing Review

1. Notate chromatic scales, ascending then descending, on the staves provided. The starting and ending pitches are provided on each staff.

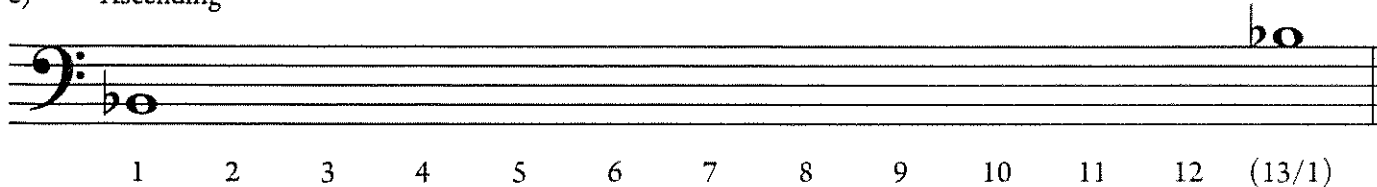
a) Ascending



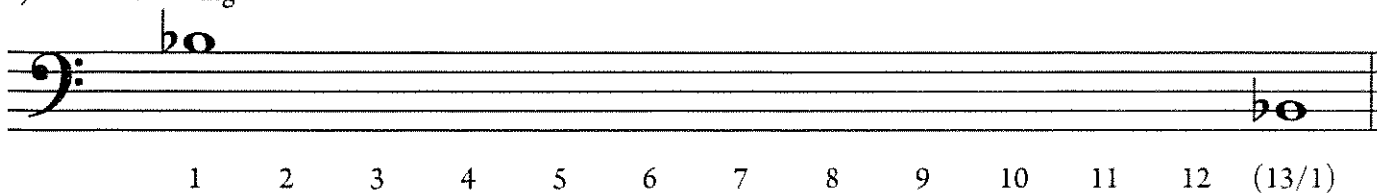
b) Descending



c) Ascending

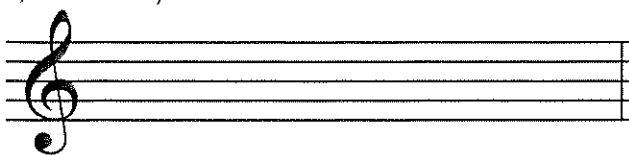


e) Descending

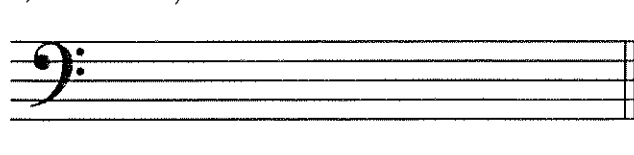


2. Notate each ascending major scale indicated without using key signatures.

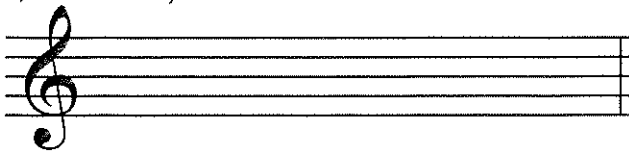
a) E Major



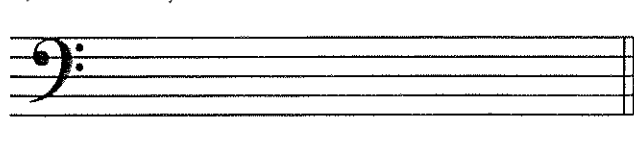
b) D Major



c) D \flat Major

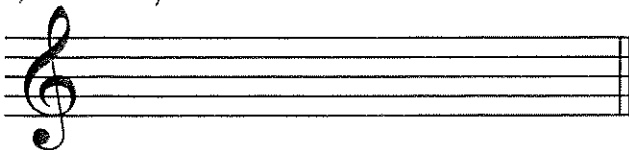


d) F Major

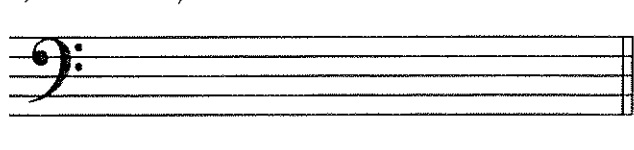


3. Using key signatures, notate each ascending major scale indicated.

a) B Major



b) B \flat Major



c) E \flat Major

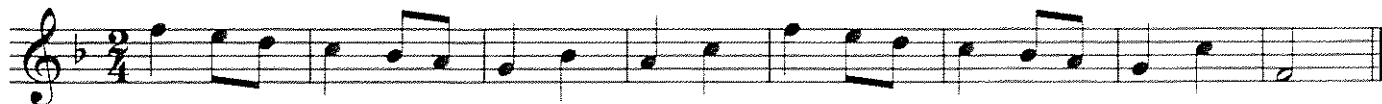


d) G Major

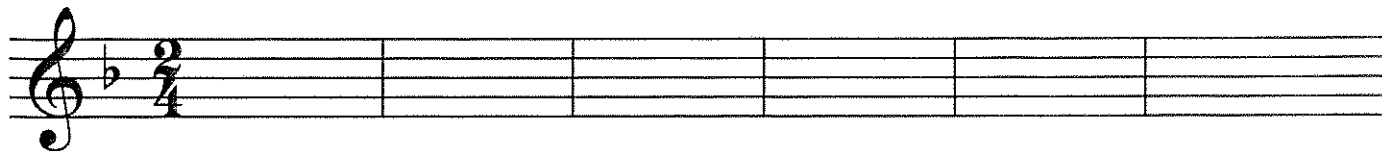


Repeat, 1st & 2nd Endings, D.C., & D.S. Review

Musical Example #1



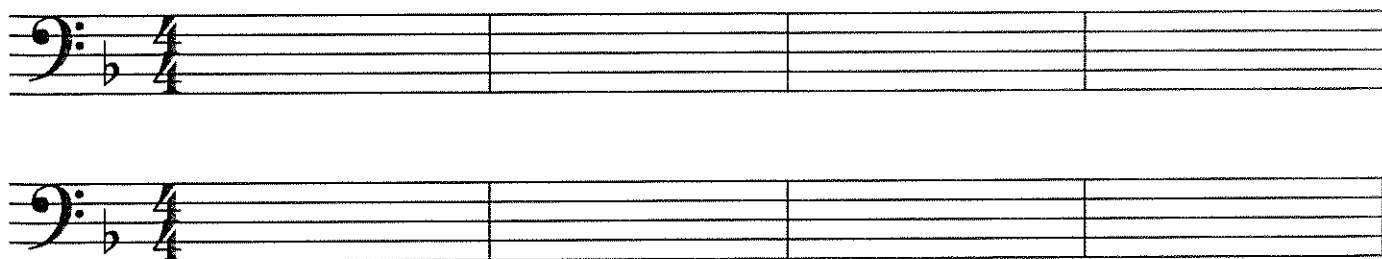
1. Rewrite Musical Example #1 using a repeat with 1st and 2nd endings.



Musical Example #2



2. Rewrite Musical Example #2 using D.C. al Fine.



Musical Example #3

1 2 3 4 5 6

7 8 9 10

11 12

3. Write the measures numbers from Example #3 in the order they will be performed.

Dynamics, Tempo, & Articulations Review

1. Label the following word banks in the space provided with the appropriate term: Dynamics, Tempo, or Articulation.

Word Bank #1

Accelerando	Largo
Adagio	Moderato
Allegro	Presto
Andante	Ritardando

Word Bank #2

Crescendo	Mezzo Forte
Decrescendo	Mezzo Piano
Forte	Pianissimo
Fortissimo	Piano

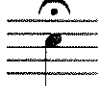
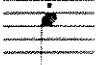

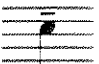
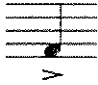

Word Bank #3

Accent
Fermata
Sforzando
Staccato
Tenuto

2. Using the appropriate term from the word banks above, label each symbol.

- a)  _____
- b) *mp* _____
- c) *pp* _____
- d)  _____
- e) *f* _____
- f) *mf* _____

3. Using the appropriate term from the word banks above, label each symbol.

- a)  _____
- b)  _____
- c)  _____
- d)  _____
- e)  _____
- f)  _____

4. Place the following terms in order from slowest to fastest:

Moderato Presto Adagio Allegro Largo Andante

5. Place the following symbols in order from softest to loudest:

f, *p*, *mf*, *ff*, *mp*, *pp* _____, _____, _____, _____, _____, _____

6. In your own words: How would you perform the following markings?

a) *ritardando* _____

b) *staccato* _____

c) *crescendo* _____

d) *fermata* _____

e) *accelerando* _____

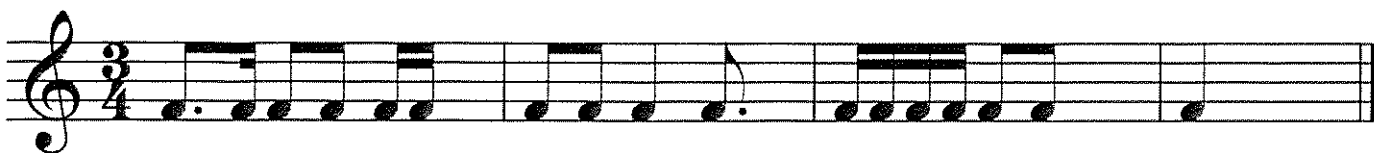
f) *accent* _____

Sixteenth Notes & Dotted Eighth Note Review

1. Fill in the missing beats in each measure with the appropriate number of sixteenth notes.



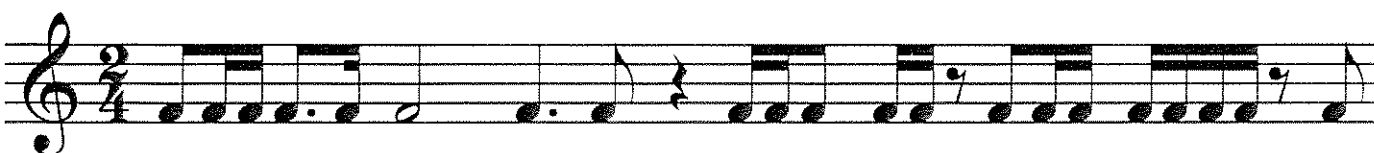
2. Complete the following measures with the appropriate rest values.



3. Draw in the missing bar lines.



4. Draw in the missing bar lines.



5. How many sixteenth notes equal each indicated note value?

a) = ____

b) = ____

c) = ____

d) = ____

e) = ____

f) = ____

6. How many sixteenth notes equal each indicated rest value in $\frac{4}{4}$?

a) = ____

b) = ____

c) = ____


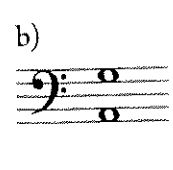

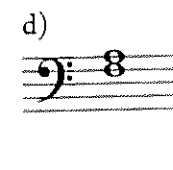


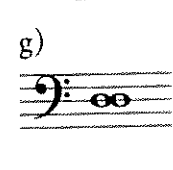
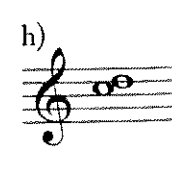
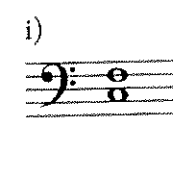

d) = ____

e) = ____

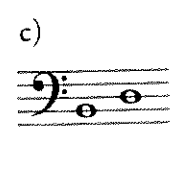
f) = ____

Interval Identification Review

1. Identify each interval (unis., 2nd, 3rd, 4th, 5th, 6th, 7th, 8va).

a) 	b) 	c) 	d) 	e) 
_____	_____	_____	_____	_____
f) 	g) 	h) 	i) 	j) 
_____	_____	_____	_____	_____

2. Identify each interval (unis., 2nd, 3rd, 4th, 5th, 6th, 7th, 8va).

a) 	b) 	c) 	d) 
_____	_____	_____	_____
e) 	f) 	g) 	h) 
_____	_____	_____	_____

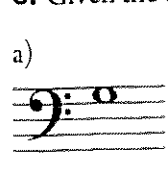
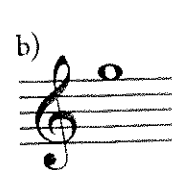
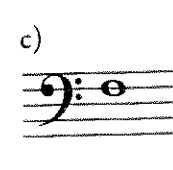

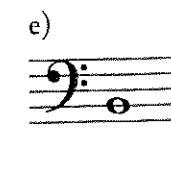
3. Which intervals of #2 are melodic? Write the letters of all corresponding examples below.

4. Which intervals of #2 are harmonic? Write the letters of all corresponding examples below.

5. Given the bottom pitch of each harmonic interval, notate the top pitch on the appropriate line or space.

a) 	b) 	c) 	d) 	e) 
6th	3rd	5th	7th	2nd

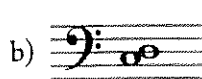
6. Given the top pitch of each harmonic interval, notate the bottom pitch on the appropriate line or space.

a) 	b) 	c) 	d) 	e) 
4th	Octave	7th	5th	3rd

Perfect & Major Intervals Review

1. Identify each interval in the blank provided.

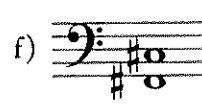




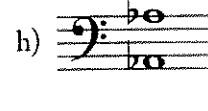












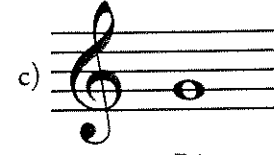
2. Given the bottom note, draw the top note of the harmonic interval in each exercise.



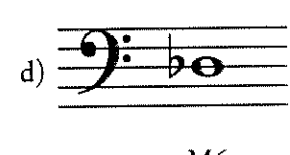
M2



M7



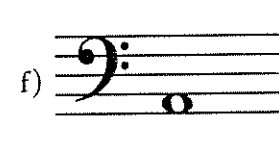
P4



M6



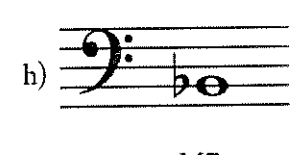
P5



M3



P8



M7

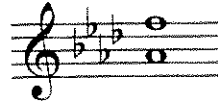
3. Identify the major key signature, then the intervals in each exercise.



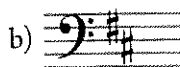
Key: _____



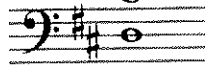
Interval: _____





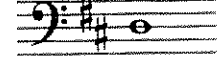


Key: _____



Interval: _____





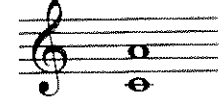


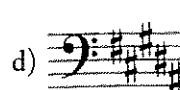
Key: _____



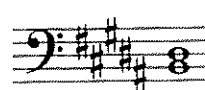
Interval: _____







Key: _____



Interval: _____



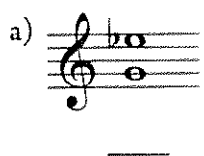
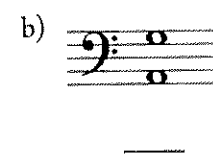
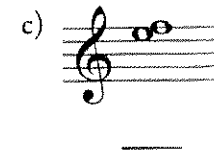
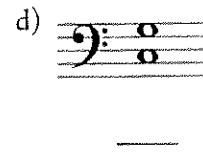
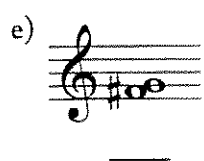
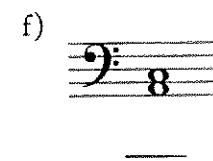
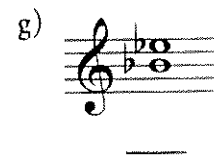
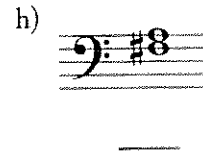


Minor, Major, & Perfect Intervals Review


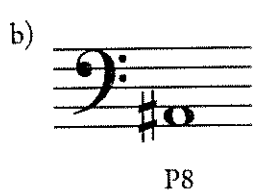

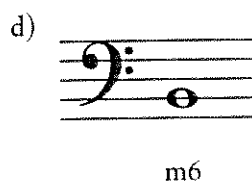
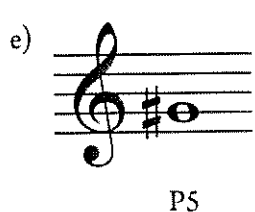
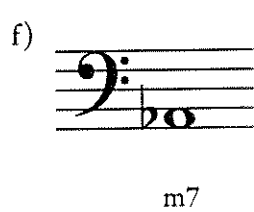

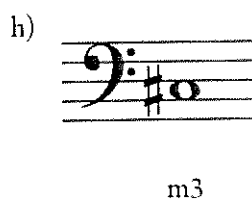
The following is a complete list of minor, major, and perfect intervals for reference in the completion of the exercises below:

P1 m2 M2 m3 M3 P4 P5 m6 M6 m7 M7 P8


1. Identify each perfect or minor interval.

a) 	b) 	c) 	d) 
e) 	f) 	g) 	h) 


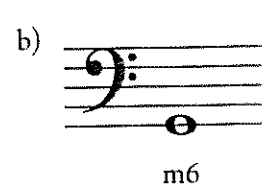



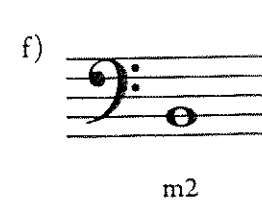

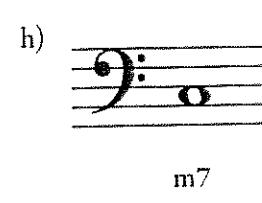
2. Given the bottom note, draw the top note of the harmonic interval in each exercise.

a) 	b) 	c) 	d) 
e) 	f) 	g) 	h) 

3. Identify each major or minor interval.





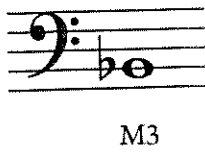
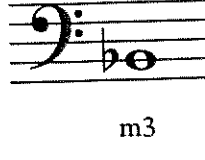
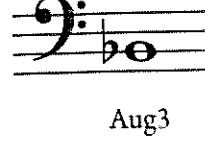
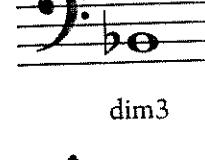



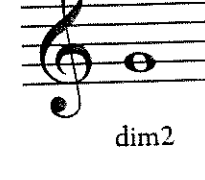

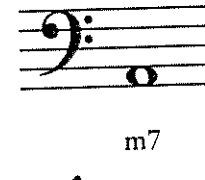
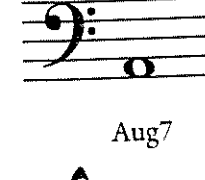
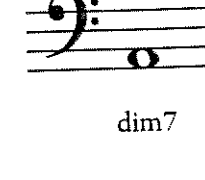
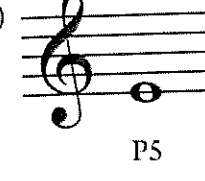
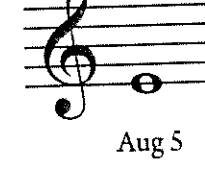
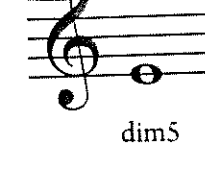

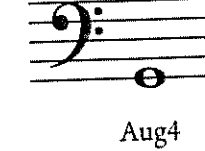
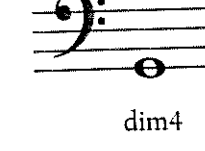
a) 	b) 	c) 	d) 
e) 	f) 	g) 	h) 

4. Given the bottom note, draw the top note of the harmonic interval in each exercise.

a) 	b) 	c) 	d) 
e) 	f) 	g) 	h) 

Augmented, Diminished, Minor, Major, & Perfect Intervals Review




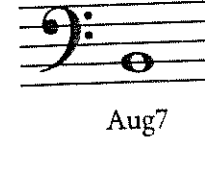


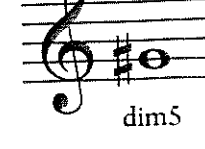
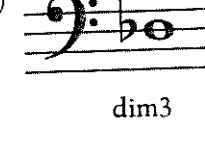
1. Given the bottom pitch of each indicated interval, notate the top pitch.

a)  M6	 m6	 Aug6	 dim6
b)  M3	 m3	 Aug3	 dim3
c)  M2	 m2	 Aug2	 dim2
d)  M7	 m7	 Aug7	 dim7
e)  P5	 Aug 5	 dim5	
f)  P4	 Aug4	 dim4	

2. Identify each interval (M, m, P, Aug, or dim) in the blank provided below it.

a)  _____	b)  _____	c)  _____	d)  _____
e)  _____	f)  _____	g)  _____	h)  _____

3. Given the bottom pitch of each indicated interval, notate the top pitch.

a)  dim2	b)  dim4	c)  Aug5	d)  Aug7
e)  Aug3	f)  Aug6	g)  dim5	h)  dim3